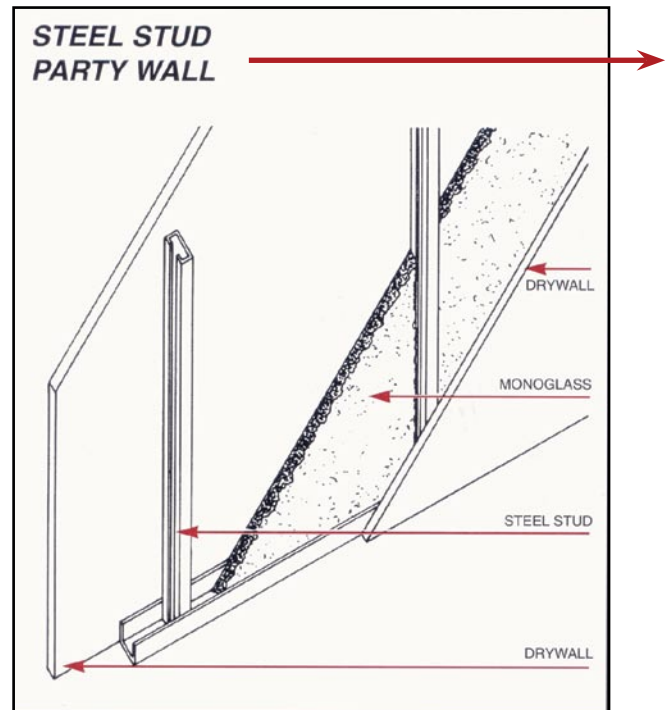
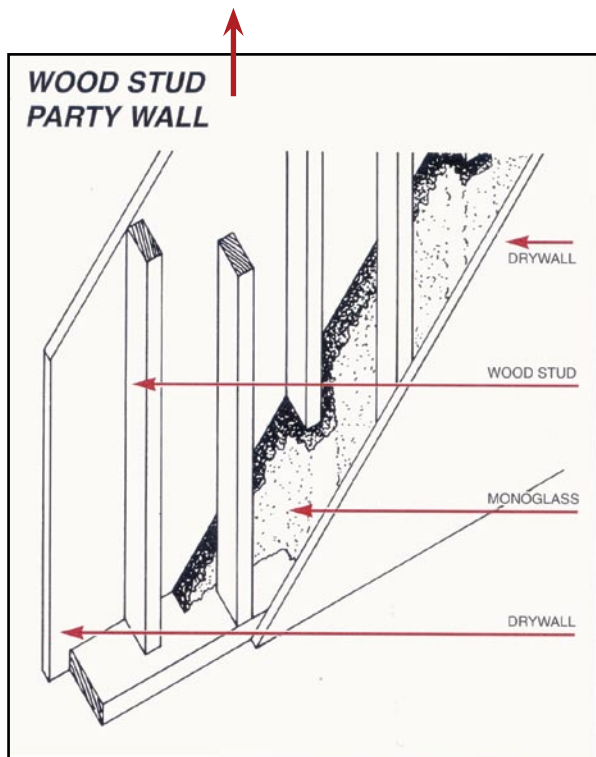




## SOUND RATING GUIDE

### Wood Frame Drywall Partition

Code	Framing	Facing	Sound Transmission Coefficient
WF 5	2 rows 2 x 3 studs 1" apart at 16" o.c.	5/8" drywall both sides and 1 1/2" Monoglass <sup>®</sup> Spray-On between studs, one side.	49
WF 10	2 x 4 studs at 16" o.c.	2 layers 1/2" drywall both sides and 1 1/2" Monoglass <sup>®</sup> Spray-On between studs, one side.	45
WF 15	2 x 4 studs at 16" o.c.	2 layers 5/8" drywall both sides and 1 1/2" Monoglass <sup>®</sup> Spray-On between studs, one side.	48
WF 20	Staggered 2 x 4 studs at 8" o.c. on 2" x 6" plate.	5/8" drywall both sides and 1 1/2" Monoglass <sup>®</sup> Spray-On between studs, one side.	51
WF 25	Staggered 2 x 4 studs at 8" o.c. on 2" x 6" plate.	2 layers 1/2" drywall both sides and 1 1/2" Monoglass <sup>®</sup> Spray-On between studs, one side.	54
WF 30	Staggered 2 x 4 studs at 8" o.c. on 2" x 6" plate.	2 layers 5/8" drywall both sides and 1 1/2" Monoglass <sup>®</sup> Spray-On between studs, one side.	56
WF 35	2 rows 2 x 4 studs 1" apart at 16" o.c.	5/8" drywall both sides and 1 1/2" Monoglass <sup>®</sup> Spray-On between studs, one side.	52





## SOUND RATING GUIDE

### Steel Frame Drywall Partition

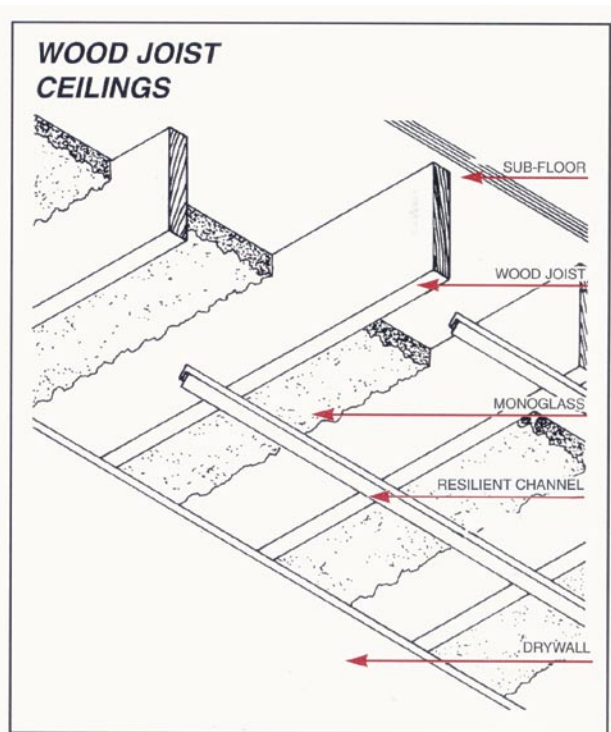
Code	Framing	Facing	Sound Transmission Coefficient
SF 5	1½" studs at 16" o.c.	⅝" drywall both sides and 1½" <b>Monoglass® Spray-On</b> between studs, one side.	46
SF 10	1½" studs at 24" o.c.	2 layers ½" drywall both sides and 1½" <b>Monoglass® Spray-On</b> between studs, one side.	55
SF 15	2½" studs at 24" o.c.	½" drywall both sides and 1½" <b>Monoglass® Spray-On</b> between studs, one side.	47
SF 20	2½" studs at 24" o.c.	⅝" drywall both sides and 1½" <b>Monoglass® Spray-On</b> between studs, one side.	51
SF 25	2½" studs at 24" o.c.	2 layers ½" drywall one side, 1 layer ½" drywall other side and 1½" <b>Monoglass® Spray-On</b> between studs, one side.	52
SF 30	2½" studs at 24" o.c.	2 layers ⅝" drywall one side, 1 layer ⅝" drywall other side and 1½" <b>Monoglass® Spray-On</b> between studs, one side.	54
SF 35	2½" studs at 24" o.c.	2 layers ⅝" drywall both sides and 1½" <b>Monoglass® Spray-On</b> between studs, one side.	57
SF 40	3⅝" studs at 24" o.c.	½" drywall both sides and 1½" <b>Monoglass® Spray-On</b> between studs, one side.	48
SF 45	3⅝" studs at 24" o.c.	⅝" drywall both sides and 1½" <b>Monoglass® Spray-On</b> between studs, one side.	50
SF 50	3⅝" studs at 24" o.c.	2 layers ½" drywall one side, 1 layer ½" drywall other side and 1½" <b>Monoglass® Spray-On</b> between studs, one side.	53
SF 55	3⅝" studs at 24" o.c.	2 layers ⅝" drywall one side, 1 layer ⅝" drywall other side and 1½" <b>Monoglass® Spray-On</b> between studs, one side.	54
SF 60	3⅝" studs at 24" o.c.	2 layers ½" drywall both sides and 1½" <b>Monoglass® Spray-On</b> between studs, one side.	55
SF 65	3⅝" studs at 24" o.c.	2 layers ⅝" drywall both sides and 1½" <b>Monoglass® Spray-On</b> between studs, one side.	56



## SOUND RATING GUIDE

### Wood Joist Ceiling

Code	Ceiling Joist	Facing	Sound Transmission Coefficient
WJ 5	2 x 8 joists at 16" o.c.	½" drywall and 1½" <b>Monoglass® Spray-On</b> between joists and drywall resilient channel.	45
WJ 10	2 x 8 joists at 16" o.c.	⅝" drywall and 1½" <b>Monoglass® Spray-On</b> between joists and drywall resilient channel.	46
WJ 15	2 x 8 joists at 16" o.c.	2 layers ½" drywall and 1½" <b>Monoglass® Spray-On</b> between joists and drywall resilient channel.	50
WJ 20	2 x 10 joists at 16" o.c.	½" drywall and 1½" <b>Monoglass® Spray-On</b> between joists and drywall resilient channel.	47
WJ 25	2 x 10 joists at 16" o.c.	⅝" drywall and 1½" <b>Monoglass® Spray-On</b> between joists and drywall resilient channel.	48
WJ 30	2 x 10 joists at 16" o.c.	2 layers ½" drywall and 1½" <b>Monoglass® Spray-On</b> between joists and drywall resilient channel.	53
WJ 35	2 x 10 joists at 16" o.c.	2 layers ⅝" drywall and 1½" <b>Monoglass® Spray-On</b> between joists and drywall resilient channel.	54





## SOUND RATING GUIDE

### Steel Joist Ceiling

Code	Joist & Floor	Facing	Sound Transmission Coefficient
SJ 5	12" steel joists 6 lb./ft. at 24" o.c. 2" – 3000 PSI concrete floor	5/8" drywall on drywall furring channel at 24" o.c. and 1" <b>Monoglass® Spray-On</b> to concrete slab ceiling.	49
SJ 10	12" steel joists 6 lb./ft. at 24" o.c. 2" – 3100 PSI concrete floor	1/2" drywall on drywall furring channel at 24" o.c. and 1" <b>Monoglass® Spray-On</b> to concrete slab ceiling.	48
SJ 15	10" steel joists 4.8 lb./ft. at 24" o.c. 2 1/2" – 4000 PSI concrete floor	1/2" drywall on drywall furring channel at 24" o.c. and 1" <b>Monoglass® Spray-On</b> to concrete slab ceiling.	50
SJ 20	12" steel joists 6 lb./ft. at 24" o.c. 2" – 3500 PSI concrete floor	2 layers 5/8" drywall on nailing channel at 24" o.c. and 1" <b>Monoglass® Spray-On</b> to concrete slab ceiling.	50
SJ 25	Hambro steel joists 10" deep 5.5 lb./ft. min. 2 1/2" or 3 1/2" – 3500 PSI concrete floor, air duct, firestop flap, electrical outlets.	1/2" drywall on drywall furring channel at 24" o.c. and 1" <b>Monoglass® Spray-On</b> to concrete slab ceiling.	55

### Monoglass® Incorporated

922 - 1200 West 73rd Avenue Vancouver,  
BC, Canada V6P 6G5

Telephone: (604) 261-7712

Toll-Free in North America: 1-888-777-2966/1-888-SPRAY-ON

Fax: (604) 261-1342

Website: [www.monoglass.com](http://www.monoglass.com)

E-mail: [sales@monoglass.com](mailto:sales@monoglass.com)

Monoglass® is a registered trademark of Monoglass® Incorporated. All rights reserved.

Issue 2017 supercedes previous issues.

©Copyright Monoglass® Inc.

